

## TRANSFER (II), 1888

The first steel hull among the Great Lakes car ferries

### Phase 2 of the Build: The Main Deck – Outriggers

Last item before flipping over:



**No. 2: 1** All of the outrigger beams scribed and ready for trimming.

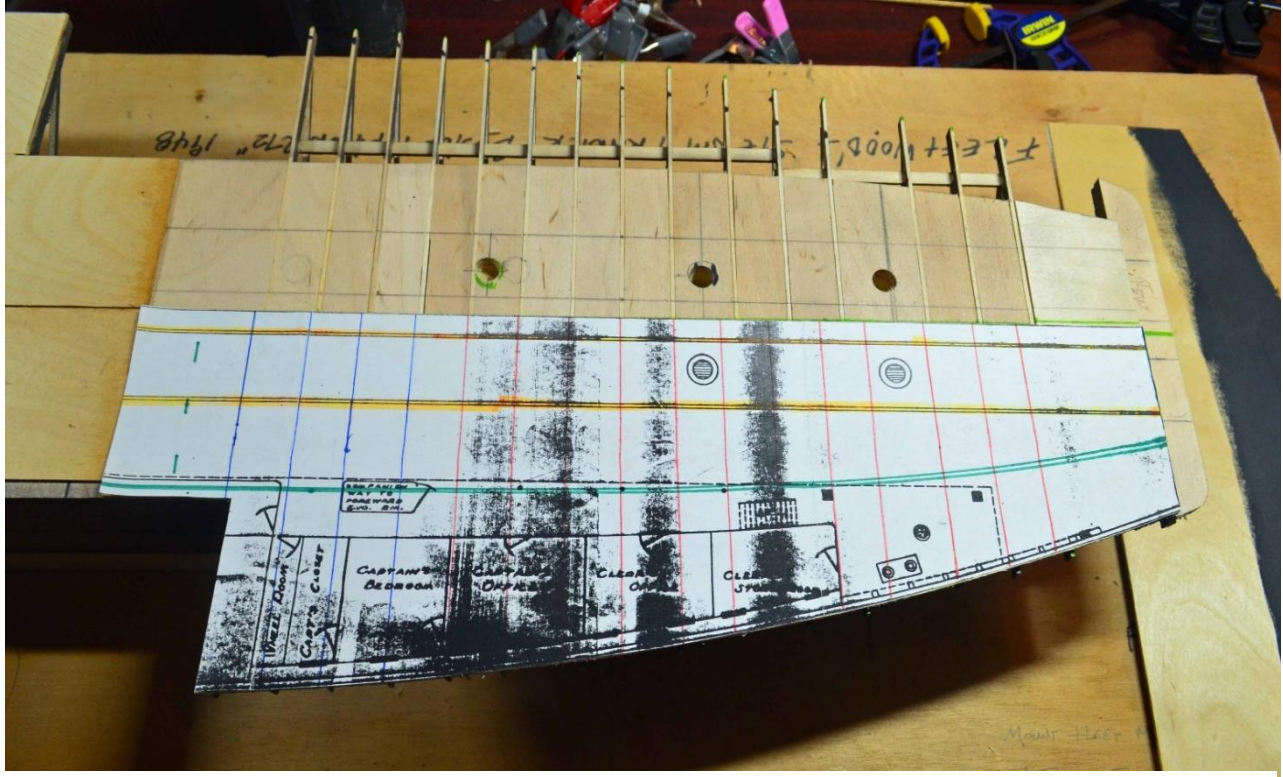
You have seen sections of the plans having been cut out to locate necessary lines, etc. I usually found the information I needed off the paper. Here, it comes to turn the paper in a template. So, as section by section go by, I cut the plan and spray glue it a cardboard backing. I then trim the overhang of the cardboard to the lines of the paper plan. In making templates I use the centerline of hull, and I do not try to stretch the spraying across from port to starboard.

Not to get ahead of myself, but before turning over the assembly, the actual outrigger beams need to be scribed and trimmed to there actual breadth. In **No. 2: 2** you can see the template is put in place at the centerline and already done. **NOTE:** Once scribed, I took a small angle square and scribed a vertical line down one side of beam. Helps you when you turn it over.

## TRANSFER (II), 1888

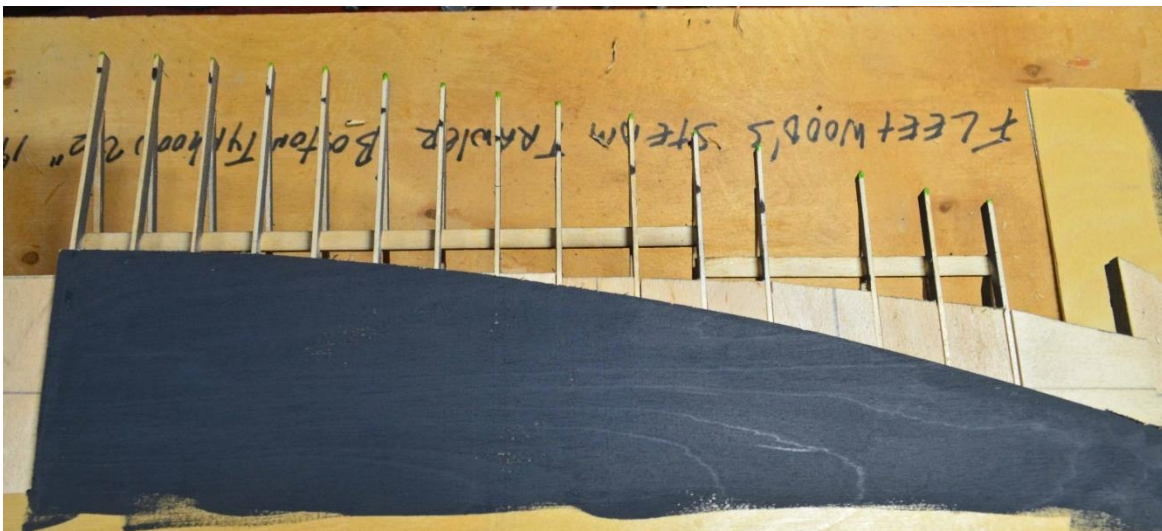
### The first steel hull among the Great Lakes car ferries

Taking a look across the centerline you can see the scribed beam. They were located by flipping over the template and re-positioned face down.



No. 2: 2 Pancake to the other side and you are all set..

NOTE: In reality this picture is of work to come, and not where the model is now. Right now, both sides are using this template to scribe! Trimming will come later.



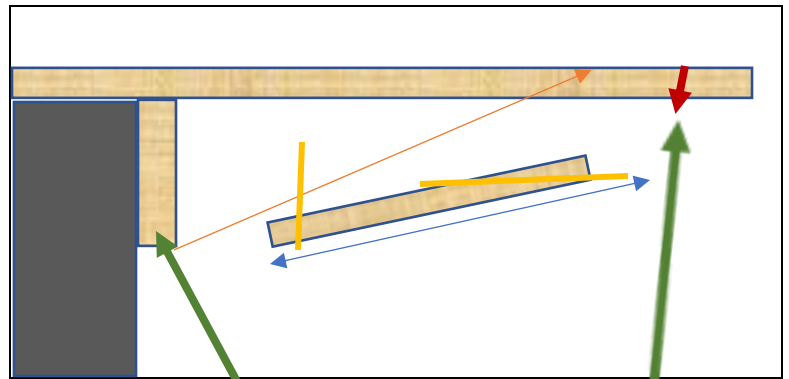
No. 2: 3 When you get to this point, the templates will be an integral part of main deck flooring. This one 1/16" basswood sheet material is black because it will go on upside down.

## TRANSFER (II), 1888

### The first steel hull among the Great Lakes car ferries

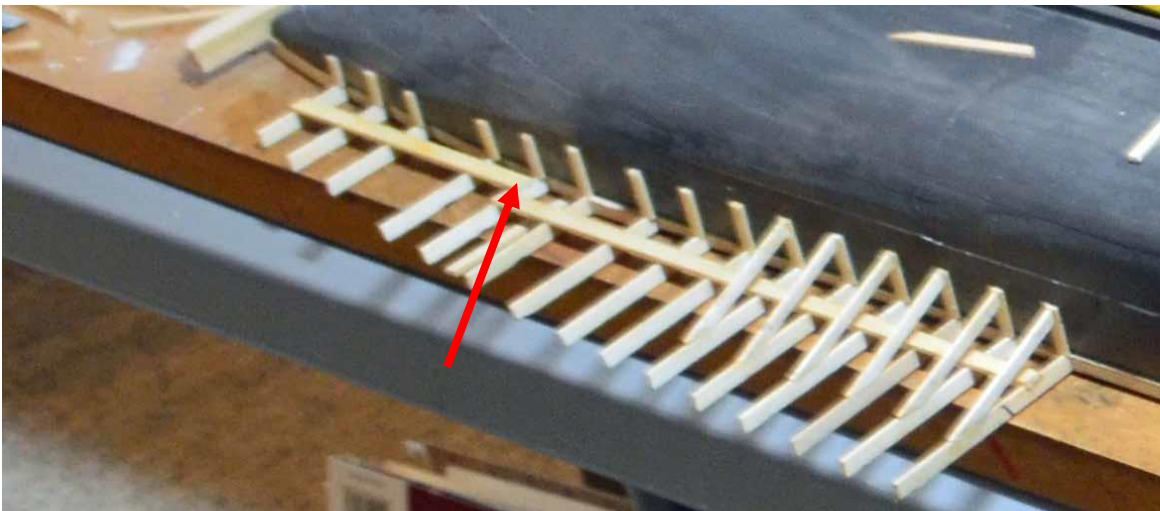
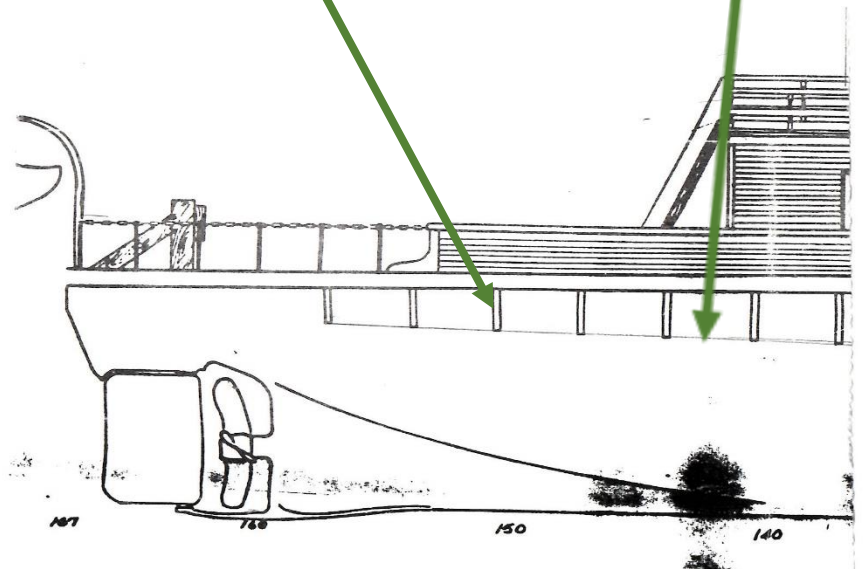
#### The finishing of outrigger assembly:

At this point, I turn the hull over, carefully. I have a solid bench top. I am going to go one side at a time, so I set the hull at the edge of the bench to leave the outriggers hanging over the edge (No. 2: 7).



**Taking the plans:** Since the ferry is a floating oval, you have to do the math on each assembly, for no two assemblies are alike.

I re-scribed the “side lines” to the now top edge of the beams. It helps when you go “angling” for position.



**No. 2: 4** The **Red** arrow shows the underside support beams.

## TRANSFER (II), 1888

The first steel hull among the Great Lakes car ferries



**No. 2: 5** With all the assemblies installed, I used a nail file clipper to trim.



**No. 2: 6** Now on to side two.

**No. 2: 7 and No. 2: 8** Show the completion of both sides of the outriggers, The gap you see is the position of the wheel house. The blue tape is ready for spray painting. I painted with Ace Hardware Interior/Exterior Premium paint and primer Matte Enamel "Iron".

## TRANSFER (II), 1888

The first steel hull among the Great Lakes car ferries



No. 2: 7 It took me 30+ minutes to all nooks and crannys.



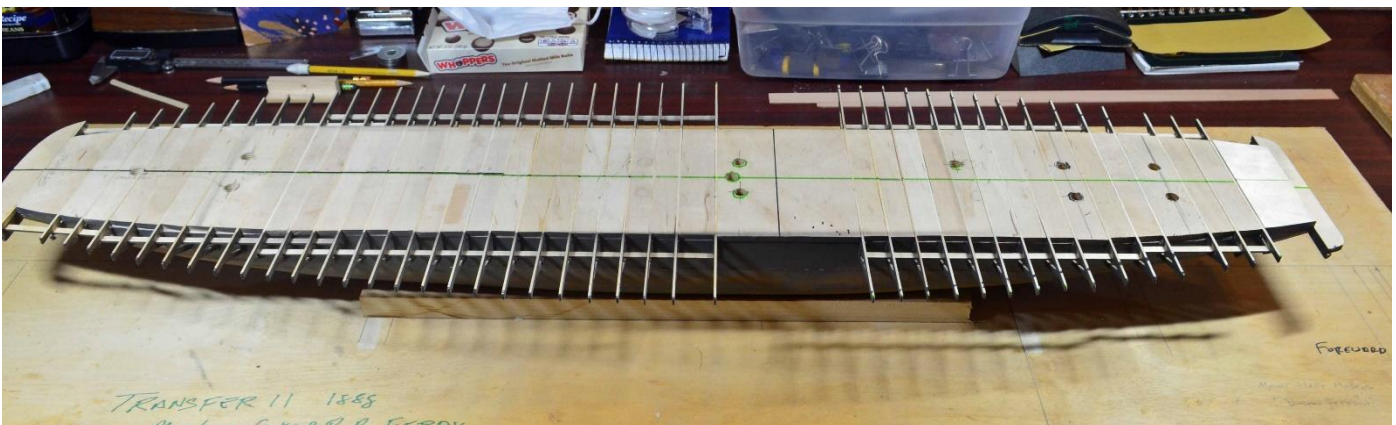
No. 2: 8 I let dry over night even though the can says it is dries in 25 minutes.

## TRANSFER (II), 1888

The first steel hull among the Great Lakes car ferries



**No. 2: 9** I never turned the hull over and sprayed from a distance (15 to 18 inches). This was done to leave the top sides clean.



**No. 2: 10** The fore and aft "tail gates" will be hand painted later.

## **TRANSFER (II), 1888**

The first steel hull among the Great Lakes car ferries



No. 2: 11 Now comes the main deck surface. The fun stuff.

**Bill Strachan, Connecticut Marine Model Society, November 11, 2022**

F: Phase 2 of the Build\_ The Main Deck\_Outriggers